

2019

A REPORT FROM THE COUNCIL OF PRESIDENTS

2019 Public Baccalaureate Sector Fact Book

CENTRAL WASHINGTON
UNIVERSITY



EASTERN WASHINGTON
UNIVERSITY



THE EVERGREEN STATE
COLLEGE



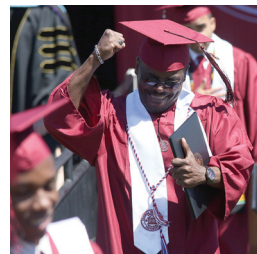
UNIVERSITY OF
WASHINGTON



WASHINGTON STATE
UNIVERSITY



WESTERN WASHINGTON
UNIVERSITY



WASHINGTON STATE
Council of
Presidents

www.councilofpresidents.org

January 2019

TABLE OF CONTENTS

Introduction	1
Access and Opportunities	3
What Would Washington Look Like as 100 College Students	6
State Funding and Tuition	7
Figure 1. Washington State 2015-17 (enacted) Near General Fund-State and Opportunity Pathways Account, Operating Budget	8
Table 1. State Funds and Tuition, FY 2017 Constant \$ Expenditures per Actual FTE Enrollment.....	9
Figure 2. 2015-17 Operating Budget by Program.....	10
Figure 3. Average Student Budget, 2018-19.....	11
Table 2. Student Budget 2018-19 Academic Year.....	11
Table 3. Tuition and Fees 2003-04 Through 2018-19	12
State Financial Aid	13
Public Baccalaureate Sector Financial Aid Quick Facts.....	14
Table 4. Federal and State Financial Aid 2016-17 Need-Based Programs and 2016 Pell Grant and Student Loan	14
Completion and Retention	15
Table 5. Degrees Conferred in 2016-17	16
Table 6. Average Undergraduate Time to Degree	16
Table 7. Average Undergraduate Credits to Degree	16
Students	17
Table 8. Fall 2016 Student Headcount	18
Table 9. 2016-17 Undergraduate	18
Table 10. 2016-17 Graduate	19
National Comparisons	21
Figure 4. Washington is 3rd in the Nation in Bachelor’s Degrees Produced Per 100 FTE Students at Public Baccalaureates.....	22
Figure 5. Washington Ranks 36th in Participation in Public Graduate Education.....	22
Figure 6. Washington Ranks 48th in Participation in 4-Year Public Higher Education at the Undergraduate Level.....	23
Figure 7. Washington Ranks 44th in the Nation in Public Graduate Degrees Awarded per 100 Graduate FTEs.....	23
Figure 8. Washington Ranks 43rd in Public Bachelor’s Degrees Produced per 1,000 Population Aged 20 to 34.....	24

INTRODUCTION



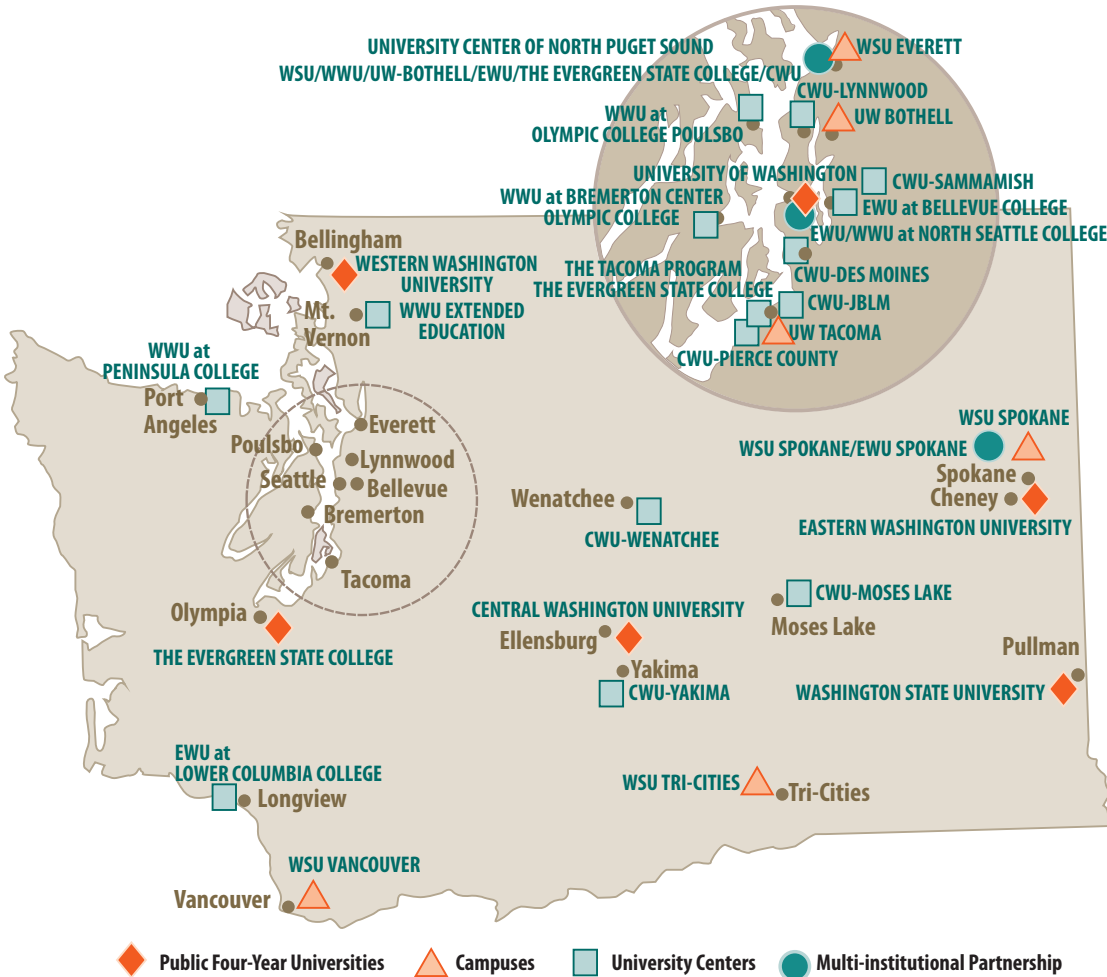
The public baccalaureate institutions include two research universities, three comprehensive universities, and the state's public liberal arts college. A board of regents or trustees who are appointed by the Governor and approved by the Senate governs each institution.

Washington's public four-year colleges and universities offer a rich and diverse selection of pathways to quality degree completion. In the public baccalaureate sector students can earn college credit as early as the 10th grade and enter our institutions as late in life as they desire; they can pursue a single course in-person, online or a combination of both; they can earn a baccalaureate, masters, doctorate, applied doctorate, applied baccalaureate degree or certificate; students can attend other institutions, work, travel, and volunteer before and while attending our institutions.

Excellence is exemplified in the accomplishments of the students, staff and faculty at Washington's public four-year colleges and universities in the quality of the academic instruction, through innovation in research, and in the scope of public service. The public baccalaureate sector offers excellence in numerous programs and in diverse disciplines, becoming increasingly recognized nationally and internationally as leaders in higher education.

Washington's public baccalaureate sector is present in all 39 counties in the state including six institutions, six campuses, multi-institutional partnerships in Spokane and Everett, university centers and academic partnerships with 21 community and technical colleges across the state, strong transfer partnerships, engaged collaboration with K-12 and a robust online learning environment.

▶ University of Washington (Seattle)	▶ Washington State University (Pullman)
◆ University of Washington Bothell	◆ Washington State University Tri-Cities
◆ University of Washington Tacoma	◆ Washington State University Vancouver
▶ Central Washington University (Ellensburg)	◆ Washington State University Everett
▶ Eastern Washington University (Cheney)	◆ Washington State University Spokane
▶ The Evergreen State College (Olympia)	
▶ Western Washington University (Bellingham)	



The public four-year colleges and universities collaborate through the The Council of Presidents (COP). COP is an association of Washington’s six public baccalaureate degree-granting colleges and universities. Located in Olympia, Washington COP strives to be a common voice for the public baccalaureate sector and a resource for decision makers on issues affecting public higher education.

COP serves a coordinating role for a number of initiatives and activities common to the public four-year institutions, fostering coordination and collaboration among the public baccalaureates as well as with other educational partners, both in Washington and nationally.

The public baccalaureate Sector Fact Book provides data to illustrate the progress and challenges facing Washington’s four-year public colleges and universities. First published in 2016, this second report highlights key data points about Washington’s public baccalaureate institutions including students, budgets and financial aid. The Sector Fact Book is also available at <http://www.councilofpresidents.org>

ACCESS AND OPPORTUNITIES



Students in Washington have more higher education options than ever before. They can earn college credit in high school or from prior experience. They can attend one of Washington's public four-year institutions or a private, non-profit university or college. They can attend one of the nation's strongest community and technical college systems and earn a transfer degree and finish their bachelor's degree at a public baccalaureate institution. They can pursue their studies through online learning, MOOCs, hybrid-learning, international programs, and competency-based programs. Following are some of the opportunities available to students that bring higher education within everyone's reach.

Early Options for High School Students

Washington's public four-year college and universities collaborate and provide numerous pre-college programs and opportunities for K-12 students to help prepare them for higher education and earn credit while in high school.

- ▶ Concurrent Enrollment – High school students enroll in college courses at their high school (College in the High School), or at a university (Running Start), earning concurrent high school credit and college credit.
- ▶ College Preparatory Programs with Exams – High school students may earn college credit through recognized standardized exams. This includes Advanced Placement, International Baccalaureate, and Cambridge International.

In addition, institutions have strong pre-college programs and partnerships serving K-12 institutions throughout the state.

Transfer Opportunities

For more than 40 years Washington's public baccalaureate institutions, in collaboration with the community and technical college and Independent Colleges of Washington, participate in the state's direct transfer agreement (DTA) associate degree and associate of science transfer (AS-T) degrees. The public baccalaureate sector participates in the state's 10 major related pathways within the DTA and AS-T agreements ranging in areas from pre-nursing to computer science.

In addition institutions have developed articulation agreements with other two- and four-year, public and independent colleges both in- and out-of state to ease the transfer from one institution to another.

Options for Adult Learners

Washington's public four-year universities and colleges participate in prior learning assessment, which evaluates previous life experience for academic credit, including knowledge and skills gained through work and life. In 2016-17, Washington's public and private, non-profit baccalaureate institutions and community and technical colleges together awarded 61,340 credits based on prior learning that applied toward certificates or degrees. In the same year, 3,217 individual students earned credits for prior learning

Online Learning

Online learning is a growing educational option that enables Washingtonians to earn college credit from anywhere in the state. Online learning is evolving to include multiple approaches such as hybrid courses which offer a mix of online and classroom learning and Massive Open Online Courses (MOOCs) which offer online coursework. While these programs are increasingly part of more students academic experiences, they offer opportunities in particular for place-bound students and working adults.

Western Undergraduate Exchange

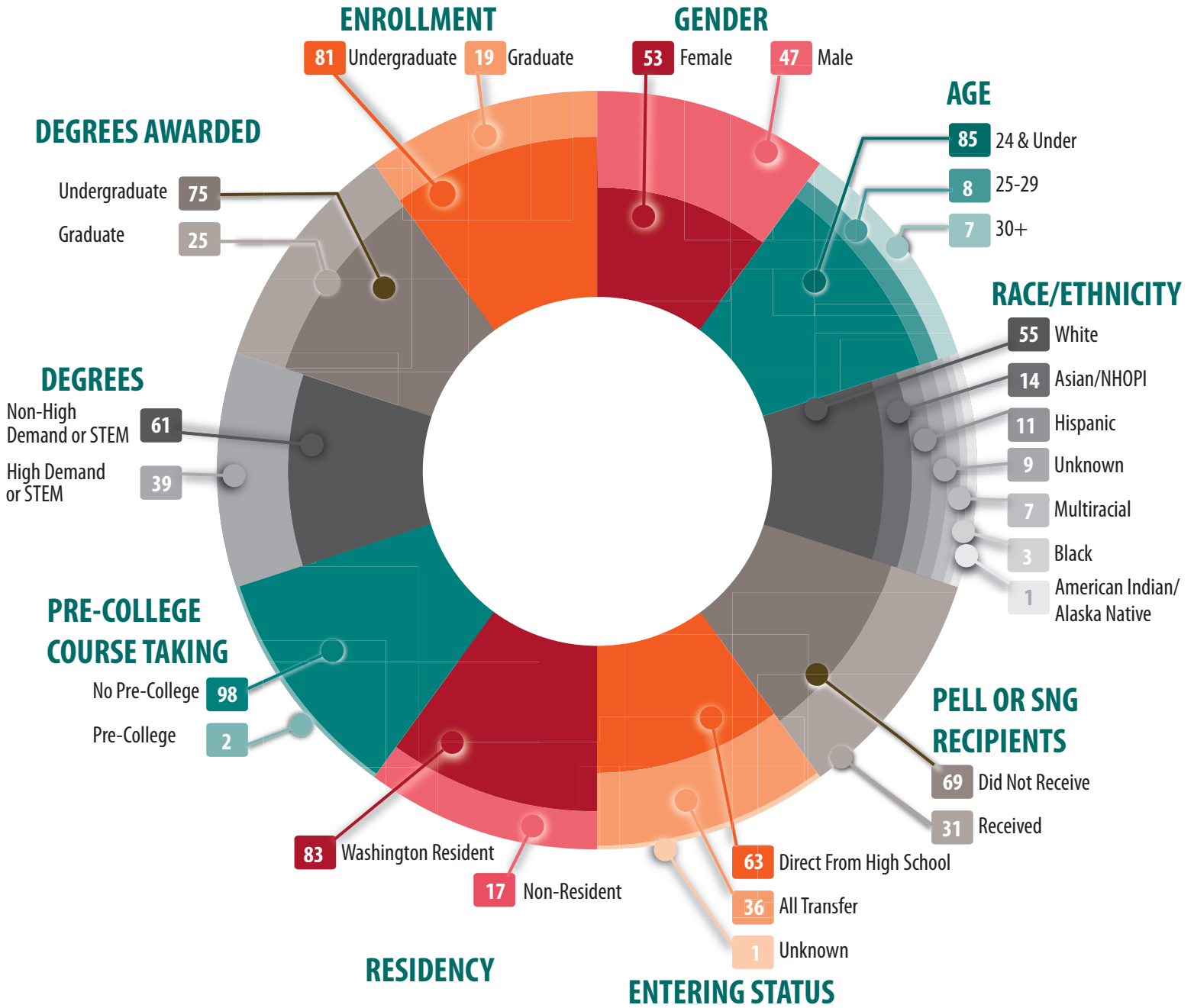
The Western Undergraduate Exchange (WUE) program allows students in WICHE member states to enroll in many two- and four-year college programs at a reduced tuition level. Some institutions require evidence of satisfactory academic performance or limit WUE enrollment in other ways.

Central Washington University, Eastern Washington University, Washington State University Pullman, Washington State University Spokane, Washington State University Tri-Cities, Washington State University Vancouver and Western Washington University currently participate in the WUE program.

International Programs

A wide range of international study opportunities are available to students at Washington's public, four-year colleges and universities. International programs are designed to offer academic, cultural and personal learning opportunities in a structured academic setting at partner institutions abroad.

What Would Washington Look Like as 100 Undergraduate College Students?



Source: 2016-17 ERDC Public Four-Year Dashboard
 Note: All data, except enrollment, represents undergraduate students

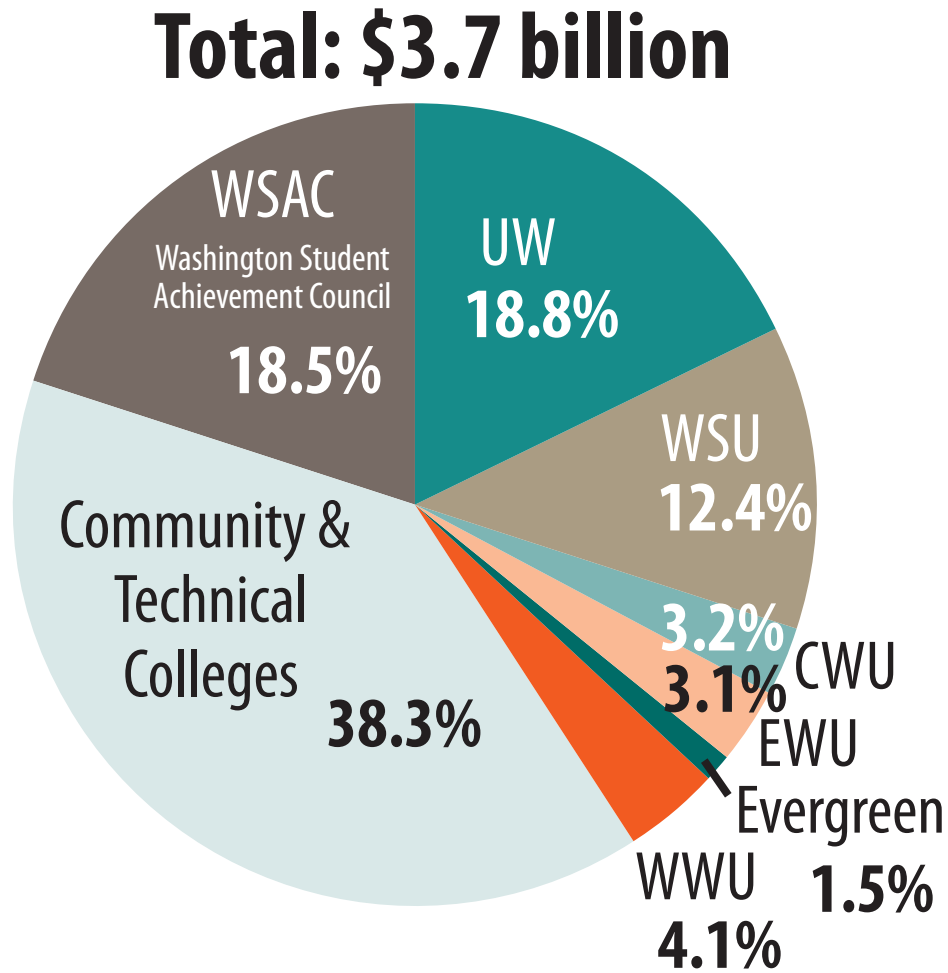
STATE NEAR GENERAL FUND AND TUITION



The State General Fund and student tuition provide the majority of funds in the state operating budget for Washington's public four-year college and universities. The General Fund includes revenues from the state sales tax, business and occupation tax, property tax and other excise taxes. Other revenue sources for higher education include grants, contracts and dedicated local revenues.

Higher education budget discussions focus on the Near General Fund. The Near General Fund includes money from the General Fund, Education Legacy Trust Account, and other sources. The state's total enacted 2017-19 Near General Fund-State operating budget was \$43.4 billion. Approximately \$3.7 billion was appropriated to the state's public colleges and universities and the Washington Student Achievement Council or approximately 8.6 percent of the total budget. Forty-four percent of the total budget for higher education in Washington was appropriated to the public baccalaureate sector.

Figure 1. Washington State 2015-17 (enacted) Near General Fund-State and Opportunity Pathways Account, Appropriations to the Higher Education Sector



Source: <http://www.fiscal.wa.gov/SpendHistFund.aspx>.

Note: All Other includes legislative, judicial, governmental operations, natural resources, transportation and special appropriations.

Table 1. State Funds and Tuition
FY 2017 Constant \$ Expenditures per Actual State-Funded FTE Enrollment

	FY2002	FY2003	FY2004*	FY2005*	FY2006*	FY2007*	FY2008*	FY2009*
University of Washington	13,212	13,161	12,954	13,660	13,921	14,737	15,012	14,500
Washington State University	12,907	12,731	12,494	12,642	13,034	13,516	13,773	13,514
Eastern Washington University	7,401	7,246	7,066	7,557	7,436	8,077	8,665	8,323
Central Washington University	7,786	7,648	7,302	7,347	7,533	7,687	8,505	8,628
The Evergreen State College	9,528	9,346	8,291	10,879	9,873	10,336	10,269	10,176
Western Washington University	7,678	7,699	7,618	7,605	7,745	8,092	8,409	8,250
Total Four-Year Institutions	11,237	11,122	10,827	11,302	11,450	12,043	12,425	12,154
Community/Technical College System	4,758	4,691	4,711	5,029	5,329	5,453	5,705	5,302
HEC Board, CHE, SFA, & SAC (1)	547	570	599	672	754	775	841	794
Total Higher Education	7,873	7,772	7,723	8,272	8,602	8,933	9,286	8,831
[biennial annual average]		7,823		7,997		8,767		9,059

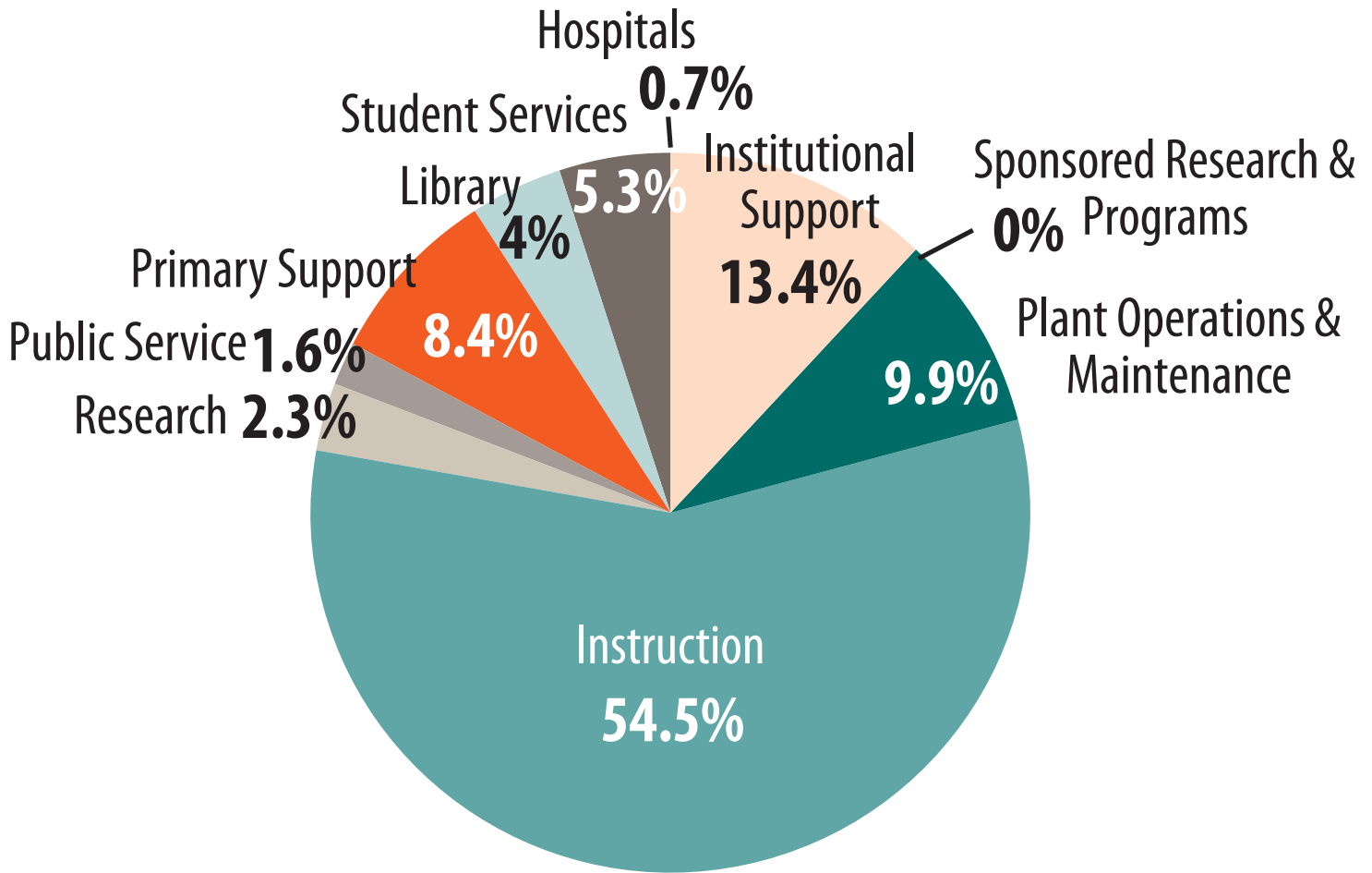
	FY2010*	FY2011*	FY2012*	FY2013*	FY2014*	FY2015*	FY2016*	FY2017*
University of Washington	12,932	13,750	12,479	13,532	12,886	14,198	13,862	14,666
Washington State University	12,349	11,857	11,273	11,759	12,632	12,409	13,333	12,544
Eastern Washington University	7,813	7,472	7,117	7,076	7,525	7,831	8,238	8,321
Central Washington University	7,828	7,366	7,458	7,520	8,600	8,442	8,608	8,863
The Evergreen State College	9,293	9,406	8,984	9,157	9,900	9,765	12,566	11,179
Western Washington University	8,332	7,861	7,455	7,678	8,059	8,390	8,847	9,336
Total Four-Year Institutions	11,093	11,198	10,461	11,067	12,248	11,827	12,130	12,331
Community/Technical College System	4,823	4,736	4,560	4,747	5,159	5,304	5,757	6,088
HEC Board, CHE, SFA, & SAC (1)	791	697	884	990	1,123	1,082	1,120	1,074
Total Higher Education	8,035	7,980	7,838	8,368	8,872	9,240	9,729	10,027
[biennial annual average]		8,007		8,103		9056		

Source: Washington State LEAP Office: July 2018

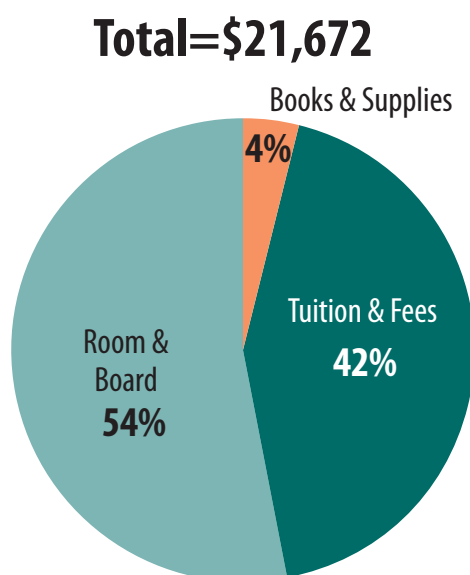
Source: <http://www.fiscal.wa.gov/SpendBienFundAgy.aspx>

*FY2004 and FY2005 adjusted for high-demand allocations; FY2006 through FY2017 from Final Monitor (AFRS) data; enacted data for FY2018 and FY2019 reflect legislative action of the 2018 legislative session.

Figure 2. 2015-17 Operating Budget by Program
(Does not include non-appropriated higher education accounts)



Source: <http://www.fiscal.wa.gov/SpendBienFundAgy.aspx>

Figure 3. Average Student Budget, 2018-19**Table 2. Student Budget 2018-19 Academic Year**

	CWU	EWU	Evergreen ¹	UW ²	WSU ³	WWU
Undergraduate Resident	\$20,189	\$20,244	\$19,962	\$24,905	\$23,938	\$20,791
Tuition & Fees	\$8,072	\$7,317	\$7,746	\$11,207	\$11,580	\$8,401
Room & Board	\$11,115	\$12,057	\$11,346	\$12,798	\$11,398	\$11,466
Books & Supplies	\$1,002	\$870	\$870	\$900	\$960	\$924
Undergraduate Non-Resident	\$35,170	\$37,368	\$38,478	\$50,285	\$38,174	\$36,205
Tuition & Fees	\$23,053	\$24,441	\$26,262	\$36,587	\$25,816	\$23,815
Room & Board	\$11,115	\$12,057	\$11,346	\$12,798	\$11,398	\$11,466
Books & Supplies	\$1,002	\$870	\$870	\$900	\$960	\$924
Graduate Resident	\$23,233	\$24,798	\$22,601	\$33,048	\$25,330	\$23,831
Tuition & Fees	\$11,116	\$12,378	\$10,175	\$16,287	\$12,798	\$11,442
Room & Board	\$11,115	\$11,550	\$11,346	\$15,936	\$11,398	\$11,465
Books & Supplies	\$1,002	\$870	\$1,080	\$825	\$1,134	\$924
Graduate Non-Resident	\$33,700	\$39,927	\$35,067	\$45,096	\$38,762	\$34,955
Tuition & Fees	\$21,583	\$27,507	\$22,641	\$28,335	\$26,230	\$22,566
Room & Board	\$11,115	\$11,550	\$11,346	\$15,936	\$11,398	\$11,465
Books & Supplies	\$1,002	\$870	\$1,080	\$825	\$1,134	\$924

Note: Student budgets do not include transportation, personal expenses or non-mandatory fees or special program-specific fees. Actual budgets will vary depending upon programs of study, dependency status, and housing situation.

1. Data for Evergreen graduate student tuition and fees is the average across the MES, MPA, and MIT programs at Olympia.

2. Data includes UW Seattle only.

3. Data includes only WSU Pullman only.

Table 3. Tuition and Fees 2003-04 Through 2018-19, Resident, Undergraduates*

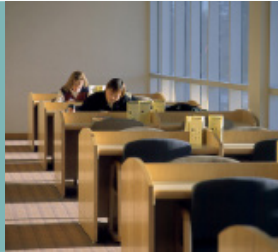
	2003-04	2004-05	2005-06	2006-07	2007-08	2008-09	2009-10	2010-11
Central Washington University	\$4,023	\$4,278	\$4,766	\$5,238	\$5,493	\$5,724	\$6,422	\$7,110
Eastern Washington University	\$3,582	\$3,822	\$4,044	\$4,278	\$4,485	\$4,701	\$5,340	\$6,063
The Evergreen State College	\$3,652	\$3,900	\$4,130	\$4,372	\$4,591	\$4,796	\$5,412	\$6,106
University of Washington	\$4,968	\$5,286	\$5,610	\$5,985	\$6,385	\$6,802	\$7,692	\$8,701
Washington State University	\$4,836	\$5,154	\$5,506	\$5,887	\$6,290	\$6,720	\$7,600	\$8,592
Western Washington University	\$3,638	\$3,886	\$4,114	\$4,356	\$4,568	\$4,788	\$5,397	\$6,081

	2011-12	2012-13	2013-14	2014-15	2015-16	2016-17	2017-18	2018-19
Central Washington University	\$7,827	\$8,925	\$8,976	\$9,017	\$8,688	\$7,653	\$7,849	\$8,072
Eastern Washington University	\$6,690	\$7,371	\$7,371	\$7,372	\$6,110	\$7,101	\$7,248	\$7,317
The Evergreen State College	\$6,909	\$7,833	\$7,833	\$7,845	\$7,509	\$7,272	\$6,678	\$7,203
University of Washington	\$10,574	\$12,397	\$12,397	\$12,394	\$11,839	\$10,753	\$10,974	\$11,207
Washington State University	\$9,886	\$11,396	\$11,396	\$11,418	\$10,916	\$11,139	\$11,391	\$11,584
Western Washington University	\$6,975	\$8,040	\$8,040	\$8,088	\$7,734	\$7,903	\$7,932	\$8,401

Source: Washington public, four-year institutions

* Tuition and Fees 2003-04 through 2015-16 includes tuition and S&A fee only. Tuition and Fees 2016-17 through 2018-19 includes tuition and mandatory fees that apply to that academic year.

STATE FINANCIAL AID



State and federal financial aid programs are critical components of Washington's higher education funding system. Without financial aid, the goal of a college degree or certificate would be beyond the reach of many Washington families.

For all need-based recipients in 2016-17, over \$2 billion in financial aid served Washington undergraduates from state, federal and other sources in the form of grants, work study awards, and loans. The federal government provided over half (55%) of the financial aid received by Washington students, followed by institutions (23%) and the state (17%).

The largest state financial aid program in Washington is the State Need Grant program. Ninety percent of all state aid to students attending a Washington public baccalaureate institution comes from the State Need Grant. Nearly a fifth of students in the public four-year sector received a State Need Grant in 2016-17. Nearly \$3.8 million State Work Study dollars served over 1,200 students in 2016-17. Finally, Washington continues to rank among the top ten states for low student debt levels.

Public, Baccalaureate Sector Financial Aid Quick Facts

- ▶ **90% of all state aid** provided to students in the four-year public sector was from the State Need Grant program in 2016-17.
- ▶ **47% of the Class of 2016 graduated with no debt** from a Washington baccalaureate degree granting institution.
- ▶ **Nearly one-fifth of students** in the public baccalaureate sector received a State Need Grant in 2016-17.
- ▶ **Top ten, Washington** ranks among states for low-student debt.
- ▶ **49% of College Bound Scholarship recipients**, an early commitment of the State Need Grant, attend a public four-year institution.
- ▶ The cumulative three-year student loan default rate for Washington public four-year institutions is **4.7% compared to the national average of 11.5%**.
- ▶ **Nearly 30% of State Work Study recipients** attended one of the Washington's public four-year institutions in 2016-17.
- ▶ **15% of student aid came from State Work Study** in the public four-year sector in 2016-17.
- ▶ Washington public four-year institutions ranked **4th in the nation for Pell Grant recipients in 2015-16**.
- ▶ Washington public four-year institutions ranked **4th in the nation for Pell Grant recipients as a percentage of undergraduate enrollment in 2015-2016**.

Table 4. Federal and State Financial Aid, Undergraduate Students 2016-17 Need-Based Programs and 2016 Pell Grant and Student Loan

	FEDERAL			STATE						
	PELL GRANT % of Recipients	STUDENT LOANS Average Debt of 2016 Graduate*	Proportion of Graduates without Debt 2015*	STATE NEED GRANT			COLLEGE BOUND SCHOLARSHIP		STATE WORK STUDY	
				Grants to Students	Served Students	Unserved Students	Grants to Students	Served Students	Grants to Students	Served Students
CWU	35.3%	\$22,827	23%	\$15,805,522	3,202	976	\$888,815	919	\$595,844	153
EWU	40.2%	\$23,748	44%	\$16,016,174	3,225	1,111	\$882,729	1,096	\$450,709	167
Evergreen	43.3%	\$21,131	42%	\$6,716,870	1,271	507	\$161,507	194	\$337,769	102
UW	26.0%	\$21,900	60%	\$64,041,516	7,841	2,822	\$4,709,447	2,835	\$933,293	263
WSU	31.0%	\$25,874	42%	\$46,560,030	6,006	1,624	\$2,853,686	1,965	\$802,777	309
WWU	24.8%	\$19,727	45%	\$13,900,245	2,474	1,124	\$837,877	853	\$676,902	216

Notes:

–The Project on Student Debt State by State Data uses Common Data Set reports. The reports exclude transfer students. Individual institutions may have more recent figures.

–The UW data for student loans is for UW Seattle only.

–The College Bound Scholarship Grants to Students and Served Students represent only the number of students who receive College Bound funds. Institutions may serve College Bound students without utilizing the state College Bound funding. Eligibility for College Bound may be met through other sources such as the State Need Grant, Washington, State Opportunity Scholarship, etc.

Sources:

The Institute for College Access and Success Project on Student Debt State by State Data. https://ticas.org/posd/map-state-data#overlay=posd/state_data/2017/wa
 Pell Grant % of Recipients 2016-17 ERDC Dashboard Pell Grant Status <http://www.ofm.wa.gov/hied/dashboard/enrollment.html>
 State Need Grant, College Bound Scholarships and State Work Study. WSAC.

COMPLETION AND RETENTION



Washington's public baccalaureate institutions are focused on moving students to degree attainment in a timely way.

Time to degree for undergraduate students has remained relatively flat over the last eight years. The average time to degree between 2007-08 and 2016-17 for undergraduate students who enrolled in a public four-year college or university directly from high school was 4.09 years. For all transfer students during this same time period the average time to degree was 2.54 years.

Table 5. Degrees Conferred in 2016-17

	CWU	EWU	EVERGREEN	UW	WSU	WWU
Undergraduate Degrees	2,546	2,173	969	10,651	5,567	3,467
Graduate Degrees	281	370	88	5,797	1,487	280
Percentage of Undergraduate Degrees, High Demand or STEM	29%	34%	18%	47%	36%	33%

Source: ERDC Dashboard

Table 6. Average Undergraduate Time to Degree

	2009-10		2010-11		2011-12		2012-13		2013-14		2014-15		2015-16		2016-17	
	Transfers	Direct High School	Transfers	Direct High School	Transfers	Direct High School	Transfers	Direct High School	Transfers	Direct High School	Transfers	Direct High School	Transfers	Direct High School	Transfers	Direct High School
CWU	2.5	4.3	2.5	4.3	2.5	4.3	2.6	4.3	2.6	4.4	2.7	4.5	2.7	4.5	2.7	4.3
EWU	2.7	4.3	2.7	4.4	2.7	4.4	2.6	4.3	2.7	4.3	2.8	4.3	2.8	4.3	2.9	4.3
Evergreen	2.4	3.9	2.4	4.0	2.5	3.9	2.4	3.9	2.5	3.9	2.5	4.0	2.5	4.1	2.5	3.9
UW	2.2	3.7	2.2	3.8	2.3	4.1	2.4	4.1	2.3	4.0	2.3	4.0	2.3	4.0	2.3	4.0
WSU	2.8	4.2	2.8	4.2	2.8	4.1	2.8	4.2	2.9	4.2	2.9	4.2	2.8	4.2	2.8	4.2
WWU	2.8	4.2	2.7	4.2	2.8	4.2	2.7	4.2	2.7	4.2	2.7	4.1	2.7	4.2	2.7	4.2

Source: ERDC Dashboard

Table 7. Average Undergraduate Credits to Degree

	2009-10		2010-11		2011-12		2012-13		2013-14		2014-15		2015-16		2016-17	
	Transfers	Direct High School	Transfers	Direct High School	Transfers	Direct High School	Transfers	Direct High School	Transfers	Direct High School	Transfers	Direct High School	Transfers	Direct High School	Transfers	Direct High School
CWU	107.8	188.9	108.1	189.2	109.7	194.4	110.4	195.1	110.2	187.7	110.8	186.5	108.8	185.6	109.7	183.9
EWU	113.2	192.2	112.6	191.6	114.0	190.8	112.8	192.2	114.6	191.2	117.5	189.9	116.6	188.9	119.5	188.3
Evergreen	110.2	177.2	111.7	177.7	110.7	175.8	108.8	173.7	110.7	174.7	111.8	175.9	111.1	173.7	108.8	170.3
UW	96.0	176.9	96.5	178.6	95.9	178.6	96.1	176.4	96.3	176.4	97.3	176.1	98.2	175.1	98.0	174.6
WSU	71.6	122.9	71.2	122.8	71.3	121.3	71.3	121.5	71.7	121.9	71.1	121.5	69.9	121.7	69.2	119.8
WWU	114.2	185.7	113.5	184.1	115.3	184.0	111.8	183.9	111.0	182.0	111.73	181.5	110.6	180.5	112.0	178.3

Note: WSU is semester credits and UW, Evergreen, WWU, CWU and EWU are quarter credits

Source: ERDC Dashboard

STUDENTS



Washington is growing more diverse and the state's public four-year university and college student population reflects this change. In 2016-17 Washington's public baccalaureate institutions enrolled 112,272 undergraduate students and 26,917 graduate students.

The majority of undergraduate and graduate students were female and Washington residents. Eighty-five percent of undergraduates were 24 or under and approximately two-thirds enrolled in a public four-year institution directly from high school. Fifty-five percent identified as White followed by Asian/Native Hawaiian/Pacific Islander (13.5%) and Hispanic (11.3%).

Nearly 40% of graduate students were 30 or older. Fifty-five percent identified as White followed by Unknown (21.7%) and Asian/Native Hawaiian/Pacific Islander (10%).

Table 8. 2016-17 Student Annual Headcount

	CWU	EWU	Evergreen	UW	WSU	WWU
Undergraduate	12,241	11,185	4,392	42,554	26,358	15,757
Graduate	837	1,487	324	17,364	6,184	741

Table 9. 2016-17 Undergraduate

	CWU	EWU	Evergreen	UW	WSU	WWU
Age						
24 and Under	78%	79%	65%	88%	84%	91%
25-29	11%	12%	16%	6%	8%	5%
30+	11%	9%	19%	6%	8%	4%
Gender						
Female	51%	52%	56%	52%	52%	56%
Male	48%	48%	44%	48%	48%	44%
Race/Ethnicity						
American Indian/AK Native	1%	1%	2%	0%	1%	0%
Asian/NHOPI	6%	4%	4%	26%	7%	7%
Black	4%	4%	5%	3%	3%	2%
Hispanic	15%	15%	10%	9%	14%	9%
White	56%	64%	66%	41%	61%	72%
Multiracial	7%	6%	8%	7%	7%	8%
Other	0%	0%	0%	0%	1%	0%
Unknown	11%	6%	5%	14%	1%	2%
Entering Status						
Direct from High School	51%	51%	41%	71%	63%	69%
All Transfers	49%	44%	59%	28%	37%	31%
Unknown	1%	5%	0%	1%	0%	0%
Residency						
Resident	92%	89%	76%	76%	84%	89%
Non-Resident	8%	11%	24%	24%	16%	11%
Low-Income						
Pell Grant Recipient	35%	40%	43%	26%	31%	25%
State Need Grant Recipient	25%	31%	28%	18%	22%	15%

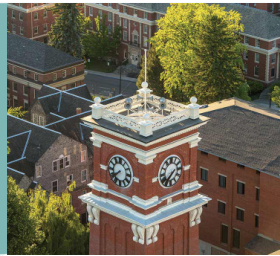
Source: ERDC Dashboard

Table 10. 2016-17 Graduate

	CWU	EWU	Evergreen	UW	WSU	WWU
Age						
24 and Under	24%	26%	16%	23%	22%	31%
25-29	35%	27%	33%	40%	34%	30%
30+	41%	46%	51%	37%	44%	38%
Gender						
Female	60%	70%	69%	54%	51%	62%
Male	40%	30%	31%	46%	49%	37%
Race/Ethnicity						
American Indian/AK Native	0%	0%	0%	1%	1%	0%
Asian/NHOPI	11%	4%	0%	12%	7%	4%
Black	0%	5%	0%	3%	2%	0%
Hispanic	10%	7%	0%	6%	6%	6%
White	66%	72%	68%	54%	47%	78%
Multiracial	4%	0%	0%	0%	3%	0%
Other	0%	0%	0%	0%	0%	0%
Unknown	10%	15%	32%	24%	34%	11%
Residency						
Resident	75%	81%	91%	51%	59%	80%
Non-Resident	25%	19%	9%	49%	41%	20%

Source: ERDC Dashboard

NATIONAL COMPARISONS

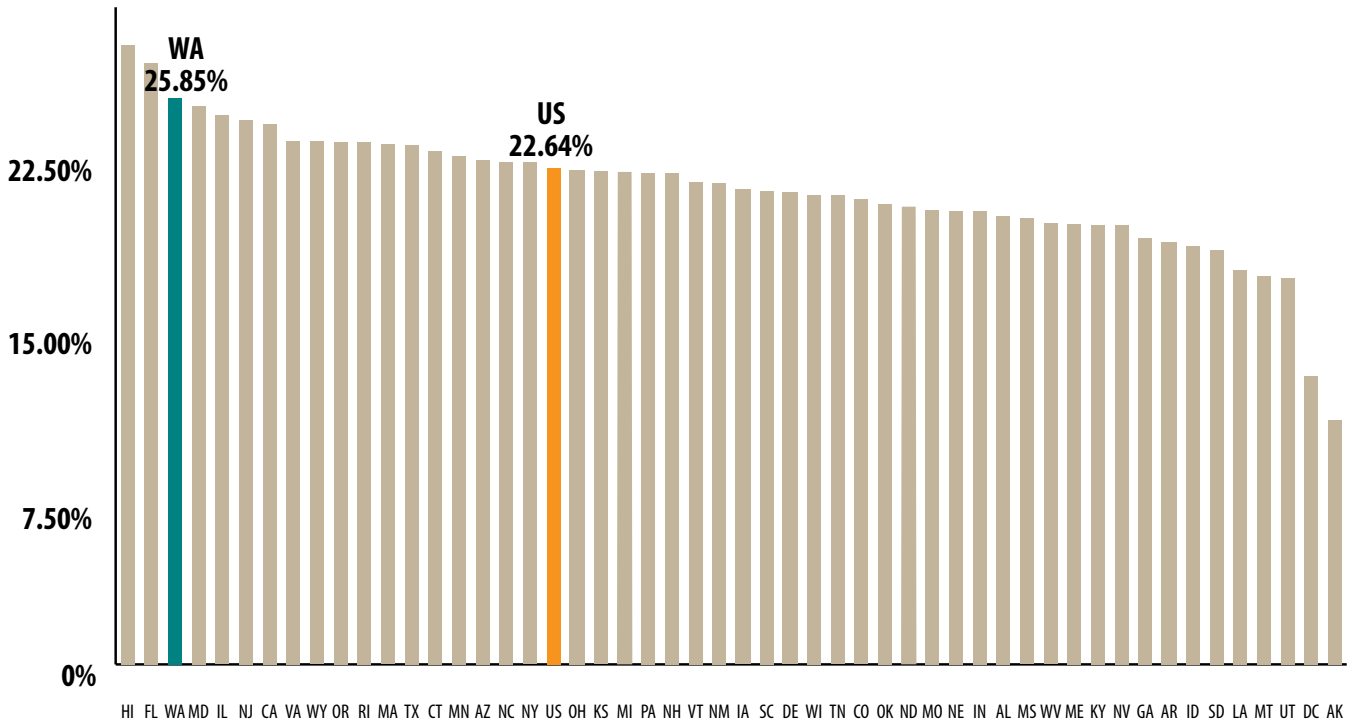


Washington's public four-year college and universities continue to be national leaders in transfer, Pell Grant recipients and completion.

An undergraduate who attends one of Washington's four-year public college or universities has an excellent chance of successfully completing his or her studies and receiving a baccalaureate degree. Washington is third in the nation in bachelor's degrees produced per 100 FTE students at a public baccalaureate institution.

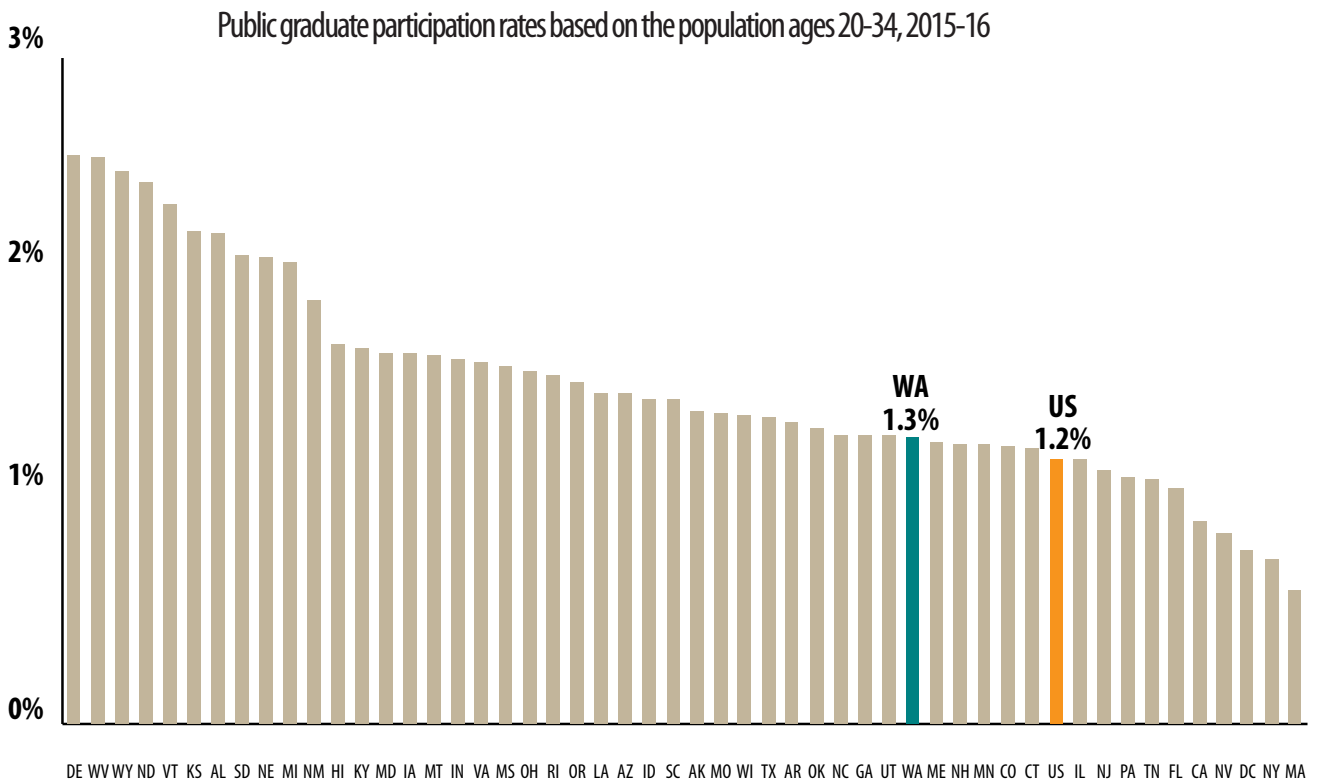
However challenges remain. Washington ranks 48th in public undergraduate education participation and 36th at the graduate level.

Figure 4. Washington is 3rd in the Nation in Bachelor’s Degrees Produced Per 100 FTE Students at Public Baccalaureates



Source: Integrated Postsecondary Education Data System (IPEDS)

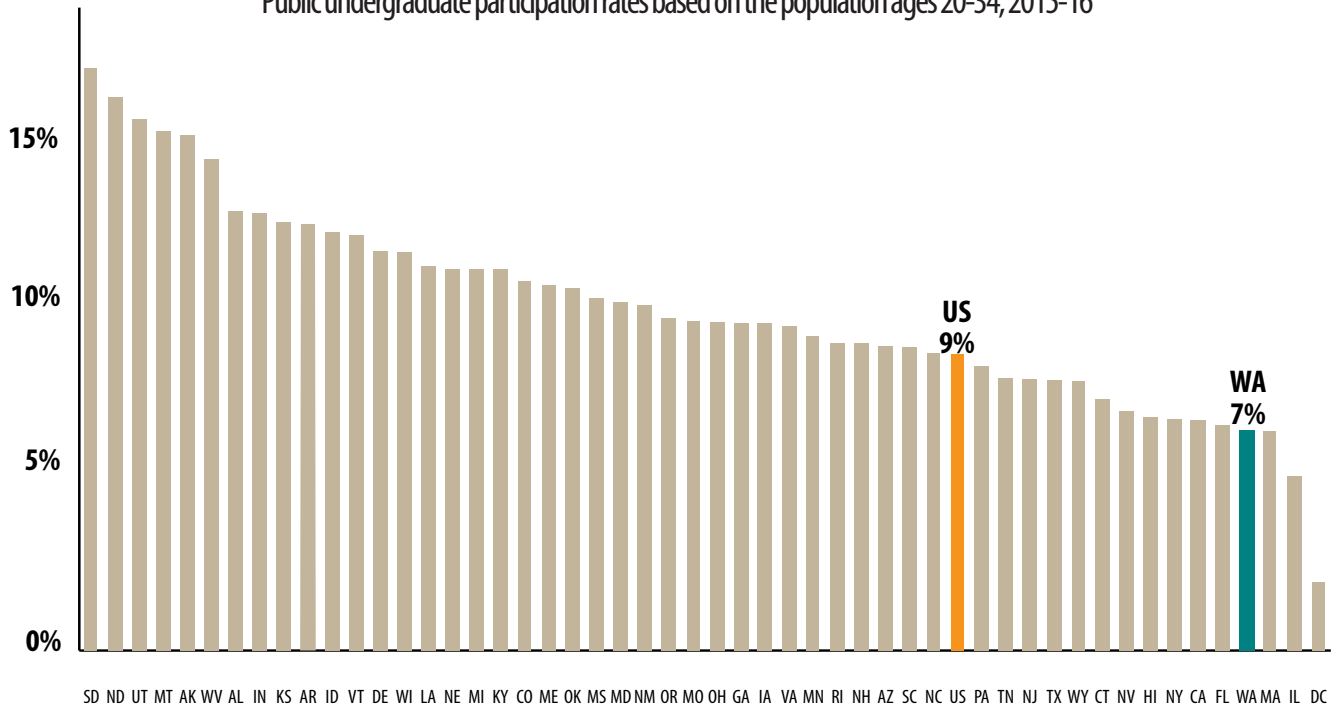
Figure 5. Washington Ranks 36th in Participation in Public Graduate Education



Source: Integrated Postsecondary Education Data System (IPEDS)

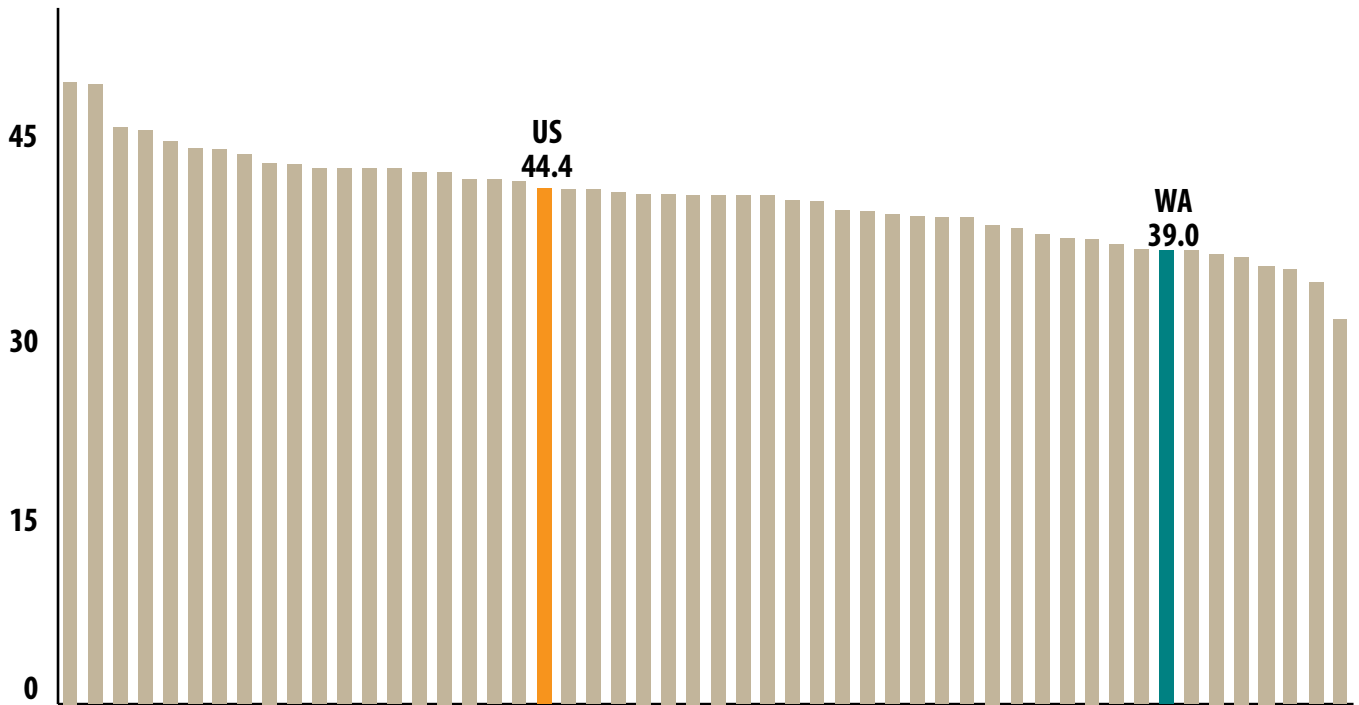
Figure 6. Washington Ranks 48th in Participation in 4-Year Public Higher Education at the Undergraduate Level

Public undergraduate participation rates based on the population ages 20-34, 2015-16



Source: Integrated Postsecondary Education Data System (IPEDS)

Figure 7. Washington Ranks 44th in the Nation in Public Graduate Degrees Awarded per 100 Graduate FTEs



Source: Integrated Postsecondary Education Data System (IPEDS)

Figure 8. Washington Ranks 43rd in Public Bachelor’s Degrees Produced per 1,000 Population Aged 20 to 34

